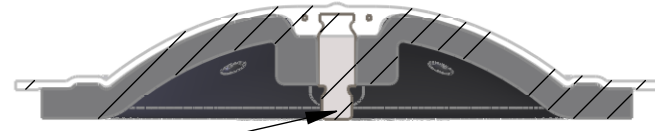
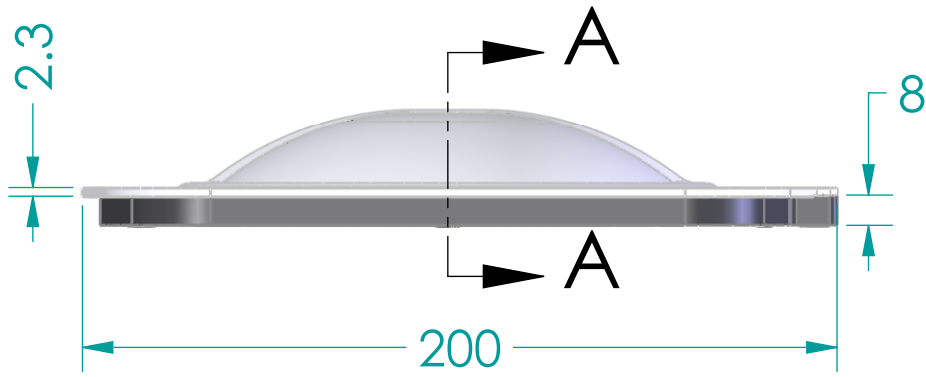


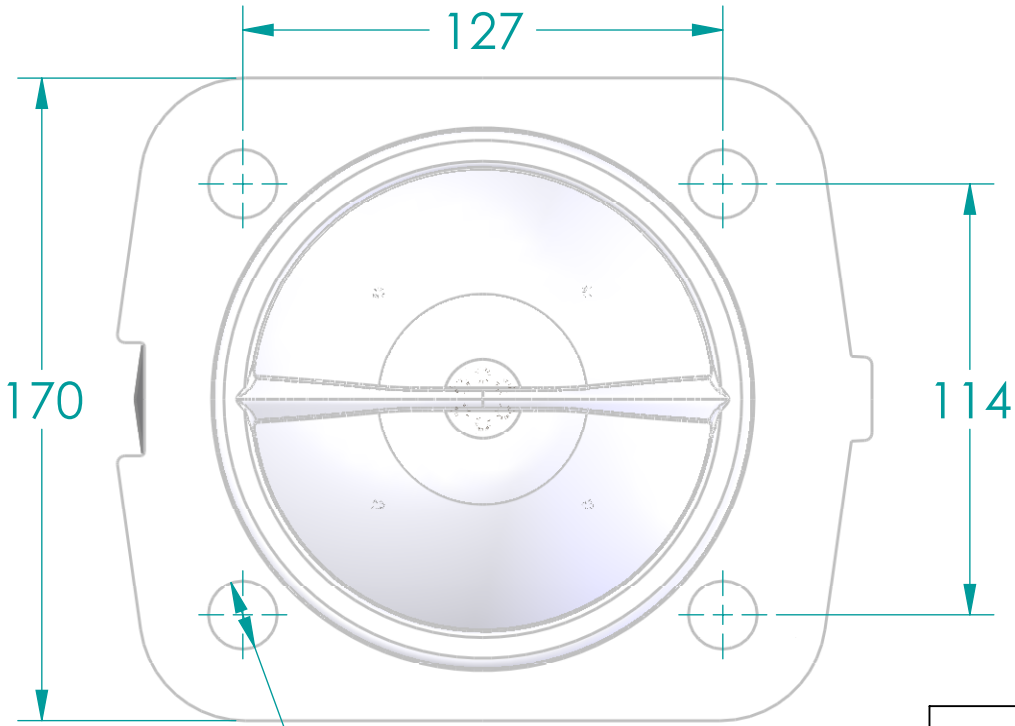
Revision History

Rev	Description	Date	Approved
A	New Drawing & OEM No.	26/09/24	JB

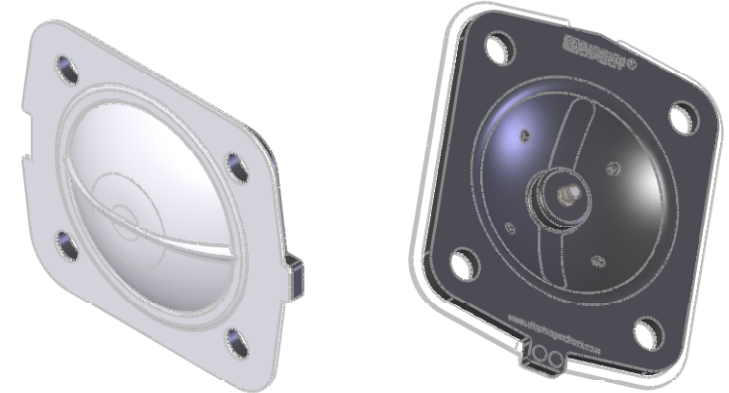


SECTION A-A

5/16" - 18 UNC
INSERT SCREW




Ø 18.2 (4 Holes)



Replacement Diaphragm for:-
OEM PART NUMBER = 600 80M5M
USED ON 3"(DN80) Diaphragm Valve

Disclaimer - Diaphragm Direct® does not manufacture, represent, nor sell OEM valves or diaphragms manufactured by any other company. Diaphragm Direct® brand diaphragms are not sponsored by any other manufacturers. Any name, model, part number, brand, image, material or referral is for descriptive purposes only. Diaphragm Direct® brand replacement diaphragms are guaranteed to fit OEM equipment and meet or exceed OEM specifications. Diaphragm Direct® brand replacement diaphragms are covered by the standard Diaphragm Direct® limited product warranty.

	Name	Date	 DIAPHRAGM DIRECT
Drawn	M.Mc Keon	28/09/24	
Checked			
Material - EPDM BACKING PTFE-DIAPHRAGM Complies with CFR 177.2600 and Conforms to USP Class VI Biological Reactivity Tests Section #87 and #88			TITLE DD30-GTFM-M
Size A	FOOT PRINT DIMENSIONS		Rev A
File: DD30-GTFM-M			
SCALE: 1:2 mm			Sheet 1 of 1